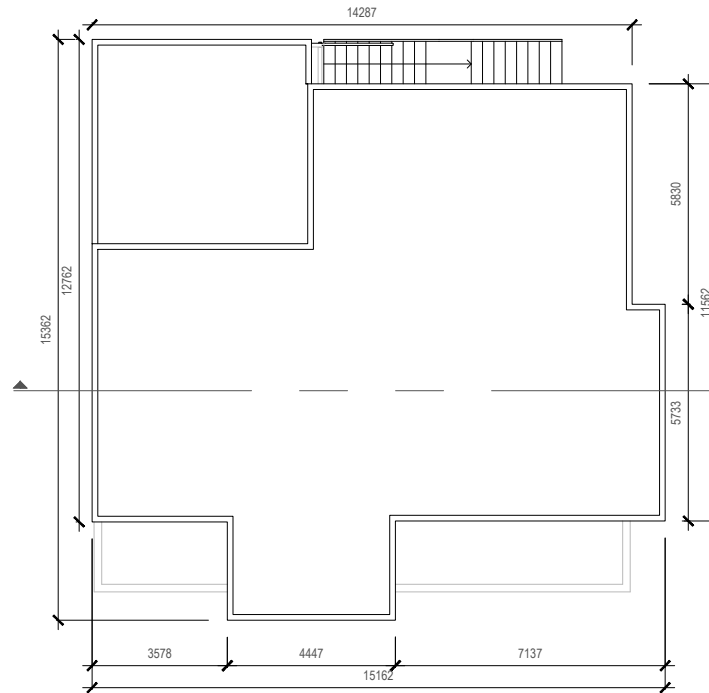
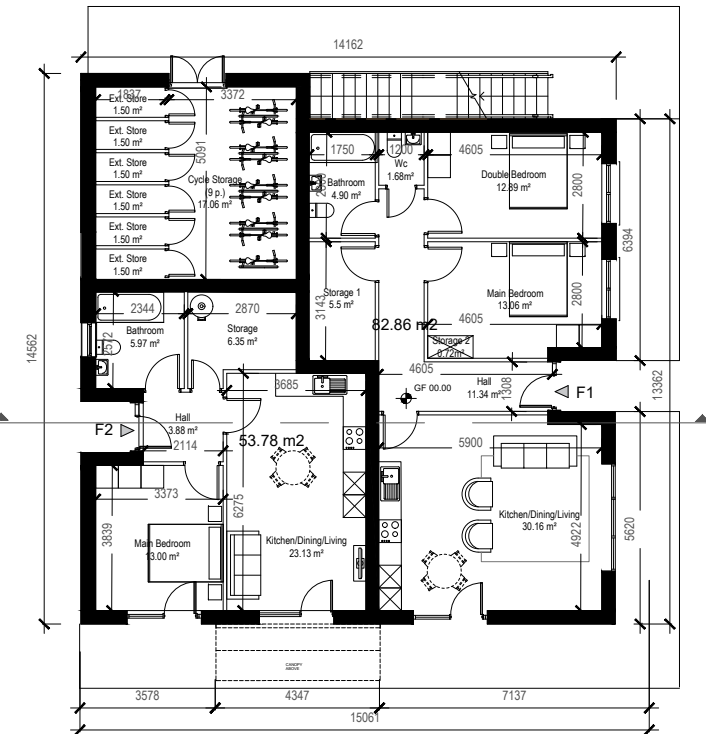


01\_First Floor Plan & 02\_Second Floor Plan

GIA F3: 79.77 m<sup>2</sup> GIA F4: 52.40 m<sup>2</sup>



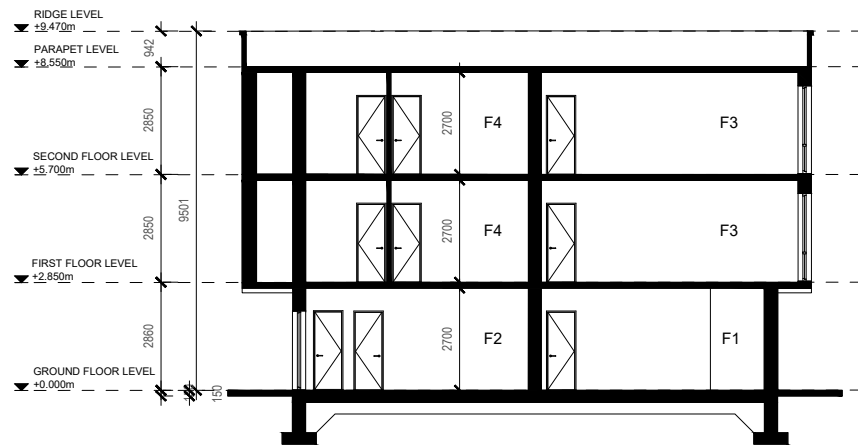
02\_Roof Plan



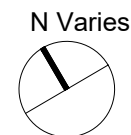
00\_Ground Floor Plan

GIA F1: 82.86 m<sup>2</sup> GIA F2: 53.78 m<sup>2</sup>

Note: Refer to site plan for orientation and floor levels



Section AA



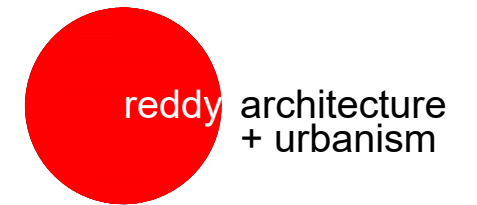
**Notes:**  
Do not scale from this drawing. Use figured dimensions in all cases. Verify dimensions on site and report any discrepancies to the architects immediately. This drawing to be read in conjunction with the Architects Specification, Fire Certificate, DAC, other consultants issued drawings and reports. Contractor is responsible for:  
1. All dimensions, quantities and performance requirements to be confirmed on site  
2. All information that pertains solely to the fabrication processes or to the techniques of construction  
3. All coordination of the work of all trades  
4. Assuring consistency with the contract documents  
© This drawing is copyright and may only be reproduced with the architect's permission.

**Drawing Notes:**  
**Apartment Block 1**  
3 Storey  
3x1B/2P  
3x2B/4P  
GIA: (Refer to the schedule below)



Apartment F1	Area SQM	Apartment F2	Area SQM
Hall	11.34 SQM	Hall	3.88 SQM
Bathroom	4.90 SQM	Bathroom	5.97 SQM
Storage 1	5.50 SQM	Storage	6.35 SQM
Storage 2	0.72 SQM	Kitchen/Dining/Living	23.13 SQM
Wc	1.68 SQM	Main Bedroom	13.00 SQM
Kitchen/Dining/Living	30.16 SQM		
Main Bedroom	13.06 SQM	Apartment F4	
Double Bedroom	12.89 SQM	Hall	5.29 SQM
		Storage	1.77 SQM
		Kitchen/Dining/Living	23.55 SQM
		Main Bedroom	13.33 SQM
		Bathroom	6.00 SQM
Apartment F3		Area SQM	
Hall	9.67 SQM		
Storage 1	4.20 SQM		
Storage 2	1.80 SQM		
Kitchen/Dining/Living	31.75 SQM		
Main Bedroom	13.12 SQM		
Double Bedroom	12.66 SQM		
Bathroom	4.37 SQM		

REV	DATE	DRN	DESCRIPTION
P02	31/01/20	LB	Issued for Information
P01.1	19/12/19	LB	Issued for Information
P01	19.12.13	LB	Preliminary Issue



Reddy Architecture + Urbanism  
41 Dean Street,  
Kilkenny  
R95 P291

T: +353 (0)56 7762697  
W: www.reddyarchitecture.com  
E: info@reddyarchitecture.com

Client Details:

AXIS Construction

Project Details:

Proposed Residential Development  
at Clonattin, Gorey

Drawing Title:  
Apartment Block 1  
Sheet 1 of 2

Job No:	Date:	Scale@A3:
P19-147K	11/11/2019	1:200

Status:	Drawn By:
0.3 Design Development	LB

Purpose:	Checked By:
Planning	MK

Drawing Number	Revision
P19-147K-RAU-XX-XX-DR-A-31109	P02