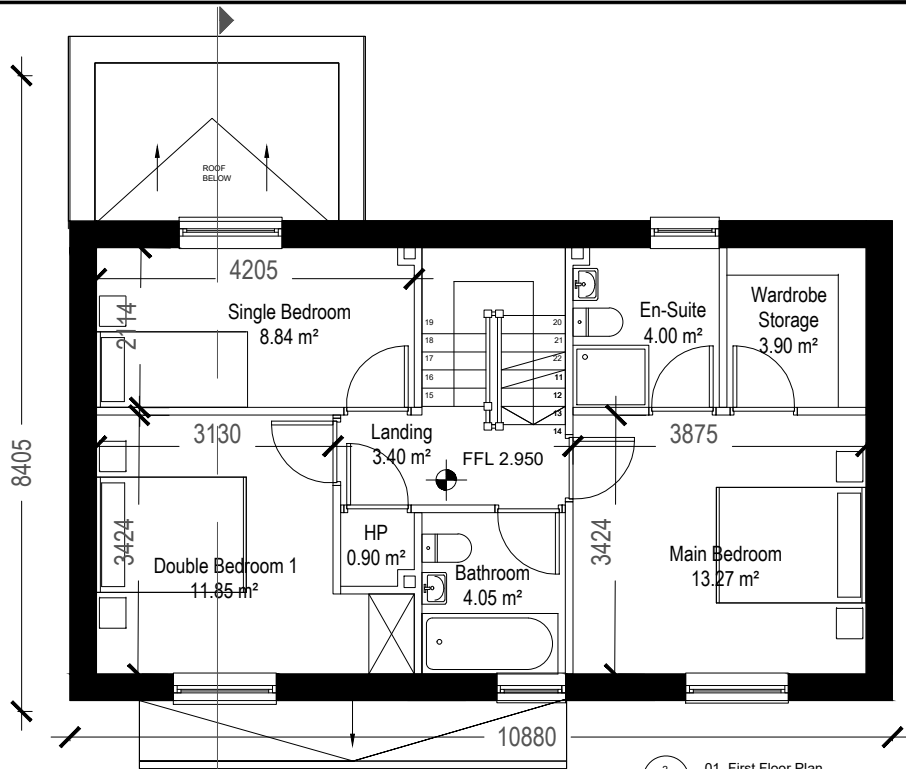
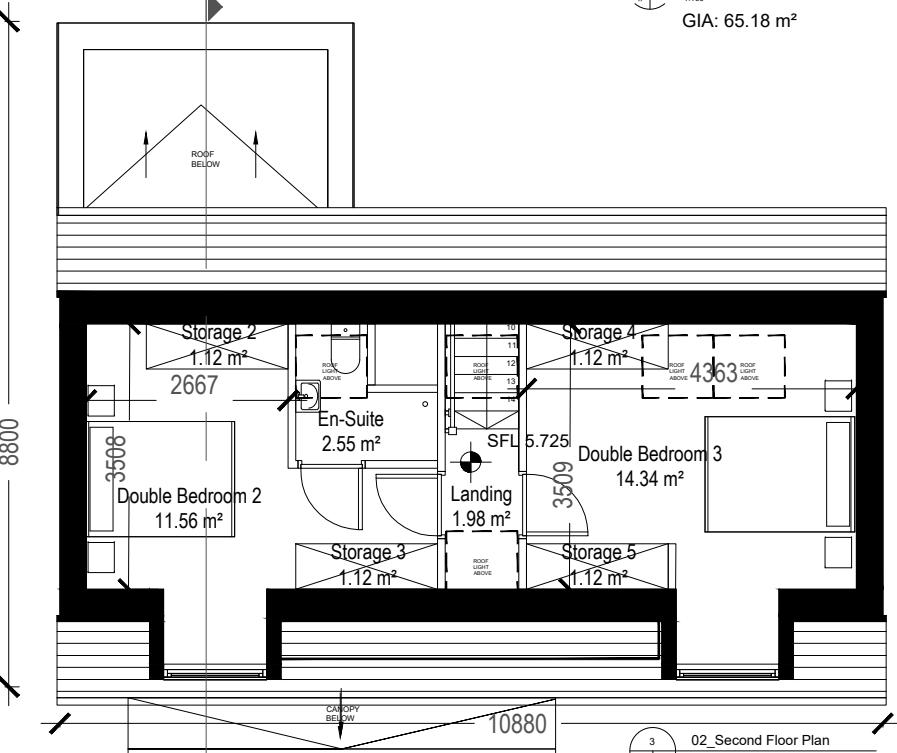


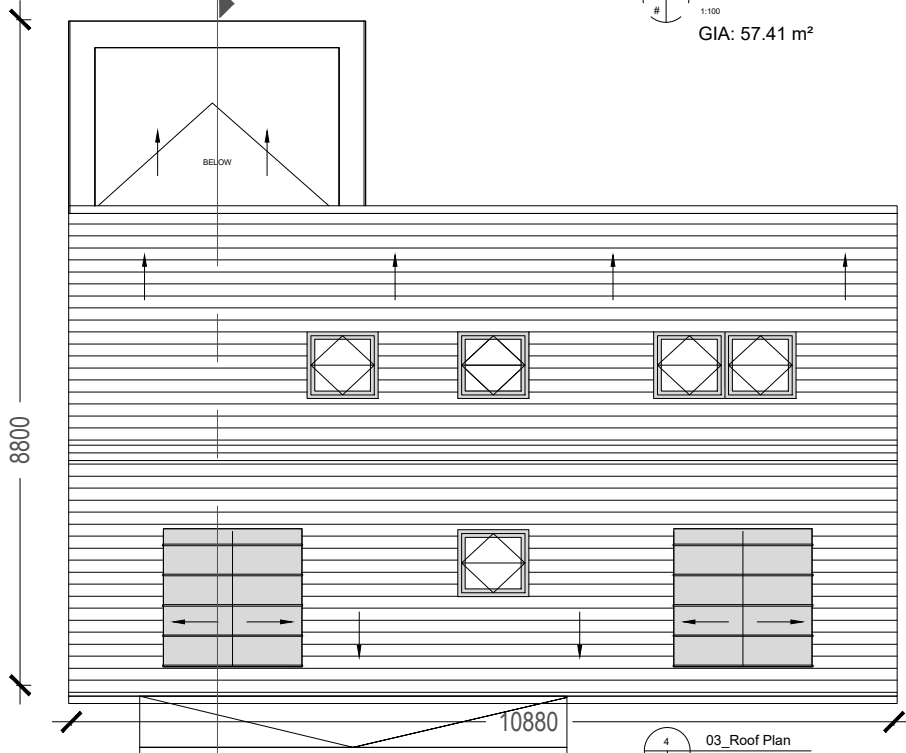
1 00_Ground Floor Plan
1:100
GIA: 65.18 m²



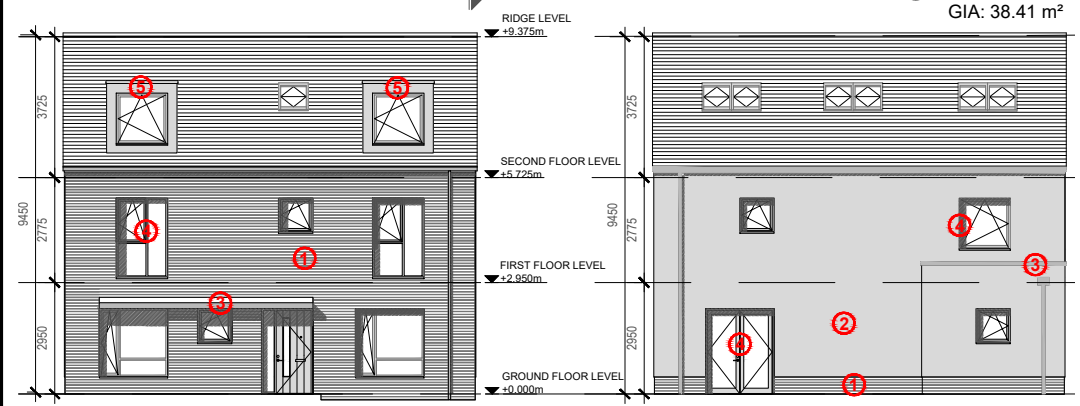
2 01_First Floor Plan
1:100
GIA: 57.41 m²



3 02_Second Floor Plan
1:100
GIA: 38.41 m²

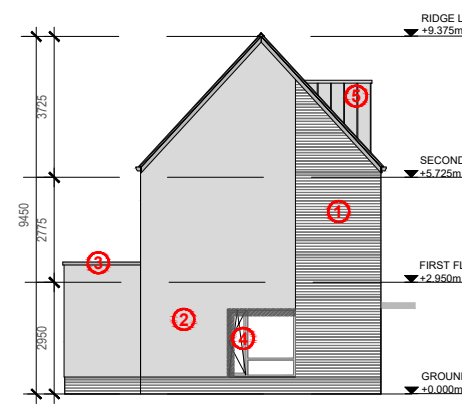


4 03_Roof Plan
1:100

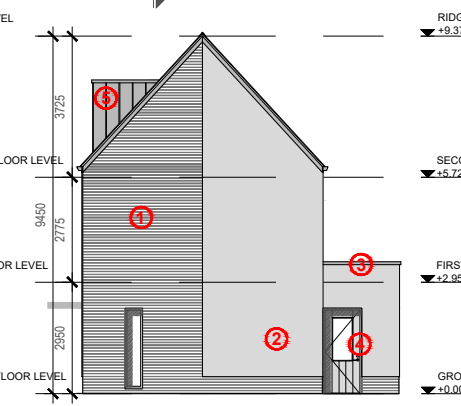


5 Front Elevation
1:200

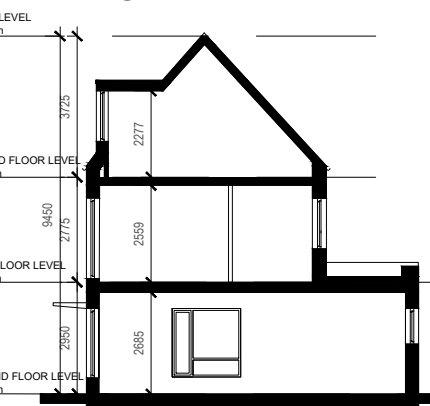
6 Rear Elevation
1:200



7 Side Elevation A
1:200



8 Side Elevation B
1:200

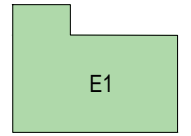


9 Section
1:200

- ① Selected Brick Module
- ② Selected Render
- ③ Precast Coping/Cills
- ④ Metal Window Frame
- ⑤ Metal Cladding
- ⑥ Metal Facia/Soffit to Balcony
- ⑦ Metal Handrail to Balcony

Notes:
Do not scale from this drawing. Use figured dimensions in all cases. Verify dimensions on site and report any discrepancies to the architects immediately. This drawing to be read in conjunction with the Architects Specification, Fire Certificate, DAC, other consultants issued drawings and reports. Contractor is responsible for:
1. All dimensions, quantities and performance requirements to be confirmed on site
2. All information that pertains solely to the fabrication processes or to the techniques of construction
3. All coordination of the work of all trades
4. Assuring consistency with the contract documents
© This drawing is copyright and may only be reproduced with the architect's permission.

Drawing Notes:
House Type E1
5 Beds, 3 Storey
Detached
GIA: 161 m²



Ground Floor	Area SQM	First Floor	Area SQM
Hall	5.28 SQM	Main Bedroom	13.27 SQM
Living Room	21.69 SQM	Double Bedroom 1	11.85 SQM
Utility room	2.37 SQM	Single Bedroom	8.84 SQM
Storage 1	0.95 SQM	Bathroom	4.05 SQM
Wc	2.41 SQM	HP	0.90 SQM
Kitchen/Dining	26.86 SQM	Landing	3.40 SQM
		En-suite	4.00 SQM
		Wardrobe Storage	3.90 SQM

Second Floor	Area SQM
Double Bedroom 2	11.56 SQM
Double Bedroom 3	14.34 SQM
Storage 2	1.12 SQM
Storage 3	1.12 SQM
Storage 4	1.12 SQM
Storage 5	1.12 SQM
Landing	1.98 SQM
En-Suite	2.55 SQM

P02	31/01/20	LB	Issued for Information
P01.1	19/12/19	LB	Issued for information
P01	19.12.13	LB	Preliminary Issue

REV	DATE	DRN	DESCRIPTION



Reddy Architecture + Urbanism
41 Dean Street,
Kilkenny
R95 P291

T: +353 (0)56 7762697
W: www.reddyarchitecture.com
E: info@reddyarchitecture.com

Client Details:
AXIS Construction

Project Details:
Proposed Residential Development
at Clonattin, Gorey

Drawing Title:
House Type E1

Job No:	Date:	Scale@A3:
P19-147K	11/11/2019	1:100 & 1:200

Status: Planning
Drawn By: LB

Purpose: 0.3 Design Development
Checked By: MK

Drawing Number	Revision
P19-147K-RAU-XX-XX-DR-A-31107	P02