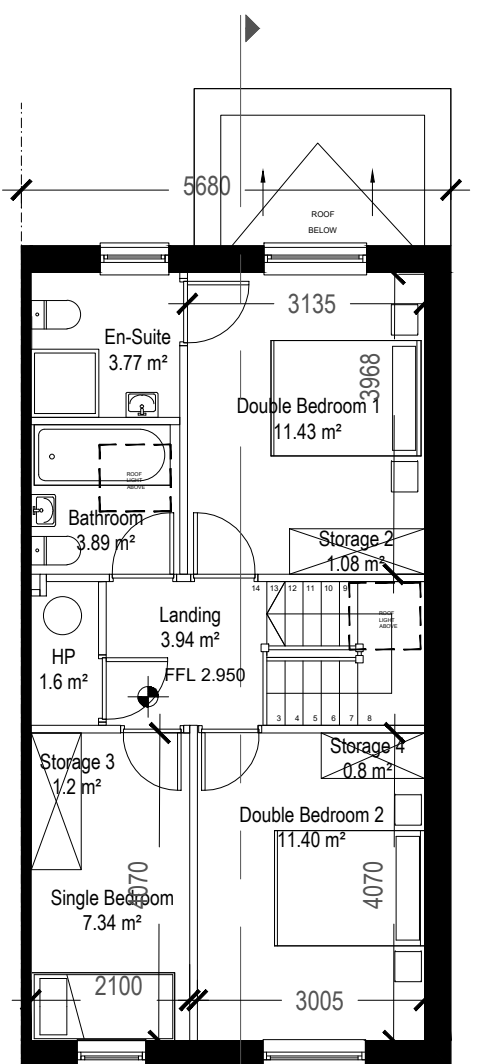
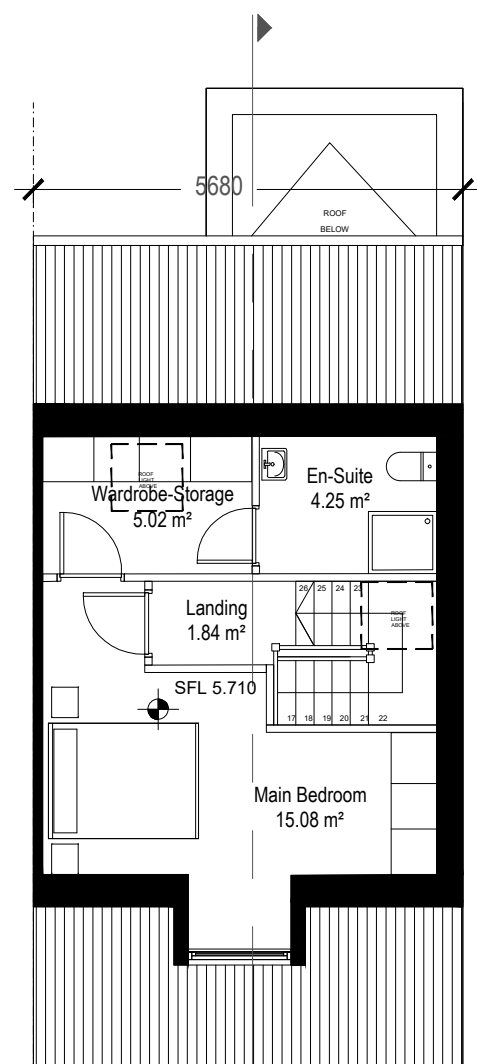


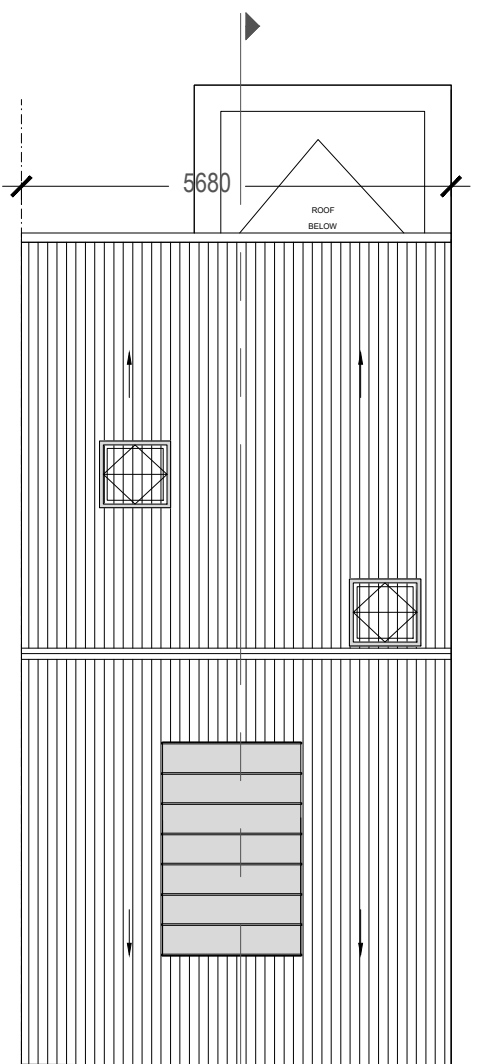
00\_Ground Floor Plan  
1:100  
GIA: 56.98 m<sup>2</sup>



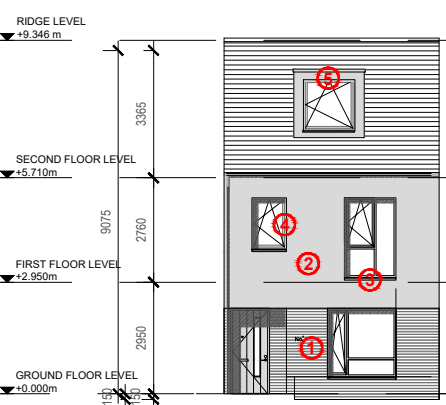
01\_First Floor Plan  
1:100  
GIA: 52.88 m<sup>2</sup>



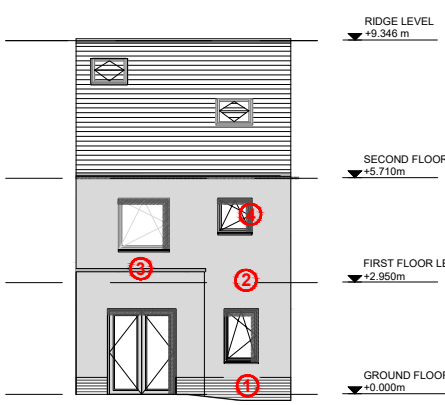
02\_Second Floor Plan  
1:100  
GIA: 31.51 m<sup>2</sup>



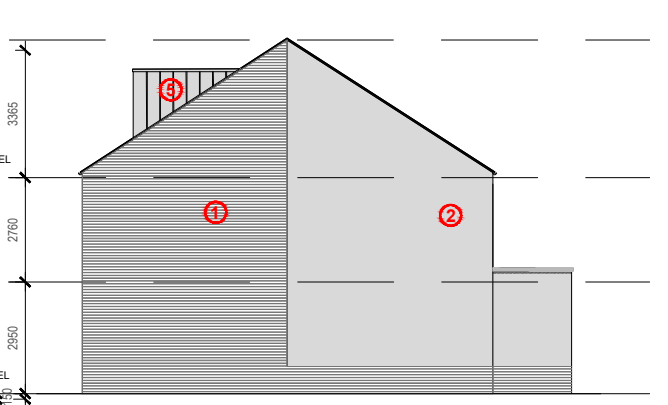
03\_Roof Plan  
1:100



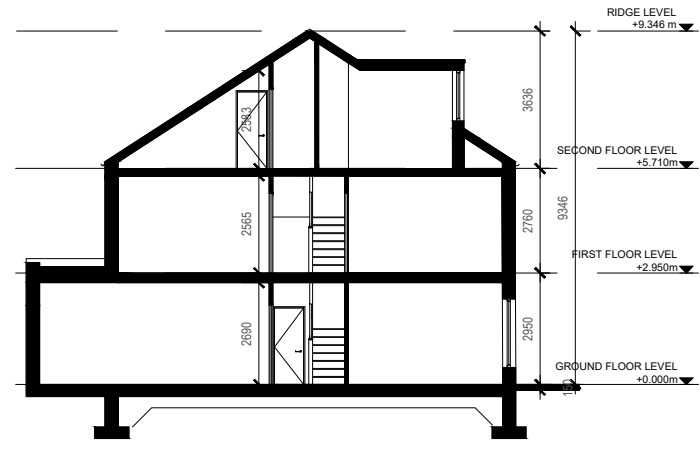
6 Front Elevation  
1:200



6 Back Elevation  
1:200



7 Side Elevation  
1:200



8 Section  
1:200

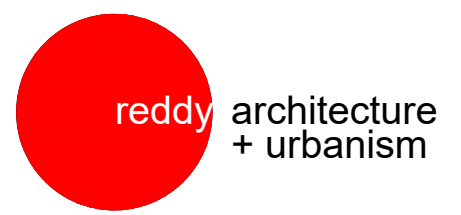
- ① Selected Brick Module
- ③ Precast Coping/Cills
- ⑤ Metal Cladding
- ② Selected Render
- ④ Metal Window Frame
- ⑥ Metal Facia/Soffit to Balcony
- ⑦ Metal Handrail to Balcony

**Notes:**  
Do not scale from this drawing. Use figured dimensions in all cases. Verify dimensions on site and report any discrepancies to the architects immediately. This drawing to be read in conjunction with the Architects Specification, Fire Certificate, DAC, other consultants issued drawings and reports. Contractor is responsible for:  
1. All dimensions, quantities and performance requirements to be confirmed on site.  
2. All information that pertains solely to the fabrication processes or to the techniques of construction.  
3. All coordination of the work of all trades.  
4. Assuring consistency with the contract documents.  
© This drawing is copyright and may only be reproduced with the architect's permission.

**Drawing Notes:**  
**House Type B3**  
4 Beds, 3 Storey  
Semidetached  
GIA: 141.37 m<sup>2</sup>

Floor	Room	Area SQM
Ground Floor	Hall	8.25 SQM
	Living Room	15.40 SQM
	Storage 1	0.95 SQM
	Wc	2.30 SQM
	Kitchen/Dining	24.77 SQM
First Floor	Double Bedroom 1	11.43 SQM
	Double Bedroom 2	11.40 SQM
	Single Bedroom	7.34 SQM
	HP	1.60 SQM
	Storage 2	1.08 SQM
	Storage 3	1.20 SQM
	Storage 4	0.82 SQM
	Bathroom	3.89 SQM
	Landing	3.94 SQM
	En-suite	3.77 SQM
Second Floor	Landing	1.84 SQM
	Main Bedroom	15.08 SQM
	Wardrobe Storage	5.02 SQM
	En-suite	4.25 SQM

REV	DATE	DRN	DESCRIPTION
P02	31/01/20	LB	Issued for Information
P01.1	19/12/19	LB	Issued for Information
P01	13.12.19	LB	Preliminary Issue



Reddy Architecture + Urbanism  
41 Dean Street,  
Kilkenny  
R95 P291

T: +353 (0)56 7762697  
W: www.reddyarchitecture.com  
E: info@reddyarchitecture.com

**Client Details:**  
AXIS Construction

**Project Details:**  
Proposed Residential Development  
at Clonattin, Gorey

**Drawing Title:**  
House Type B3

Job No: P19-147K	Date: 11/11/2019	Scale@A3: 1:100 & 1:200
---------------------	---------------------	----------------------------

Status: 03: Design Development	Drawn By: LB
-----------------------------------	-----------------

Purpose: Planning	Checked By: MK
----------------------	-------------------

Drawing Number P19-147K-RAU-XX-XX-DR-A-31104	Revision P02
---	-----------------